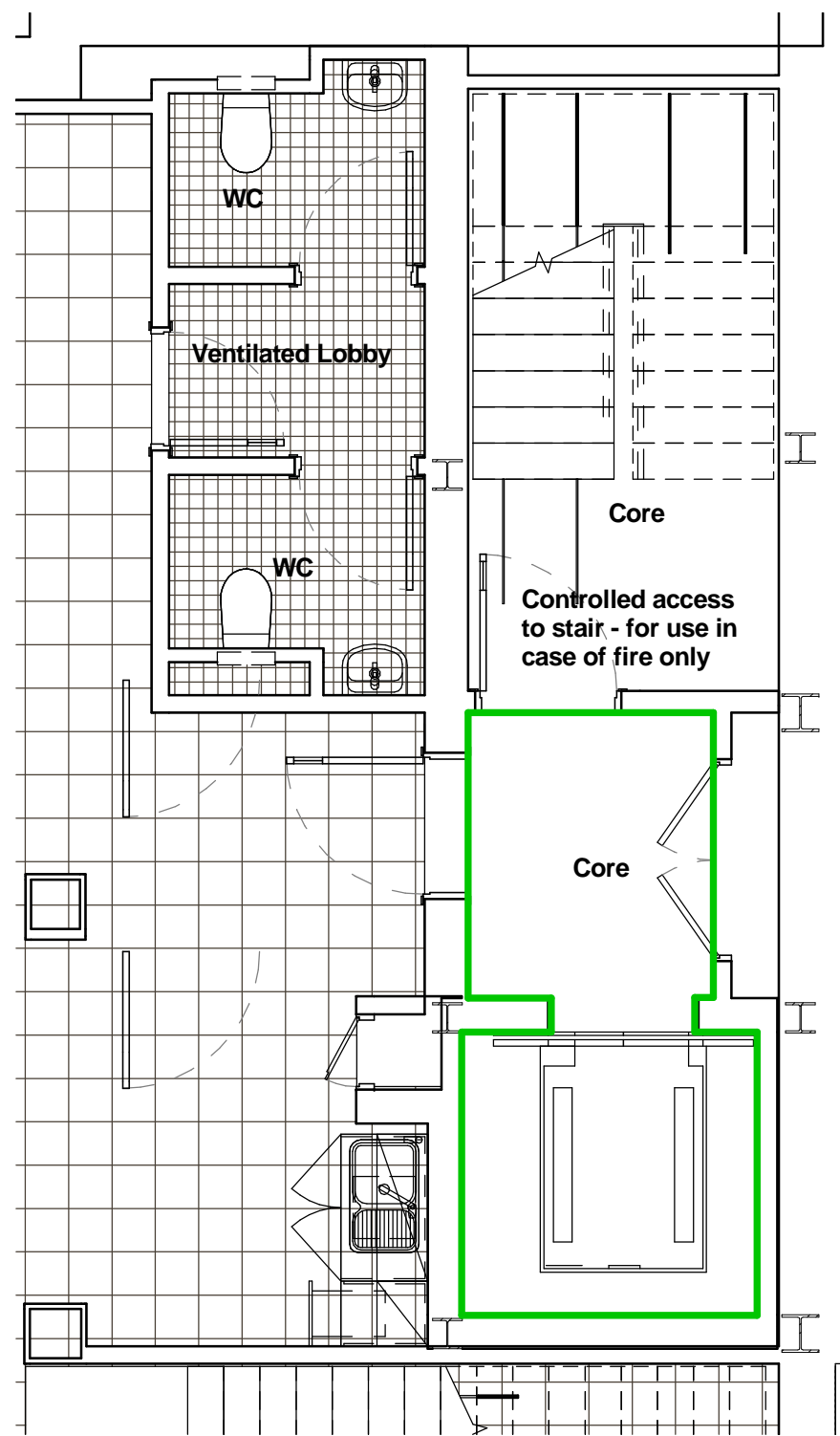
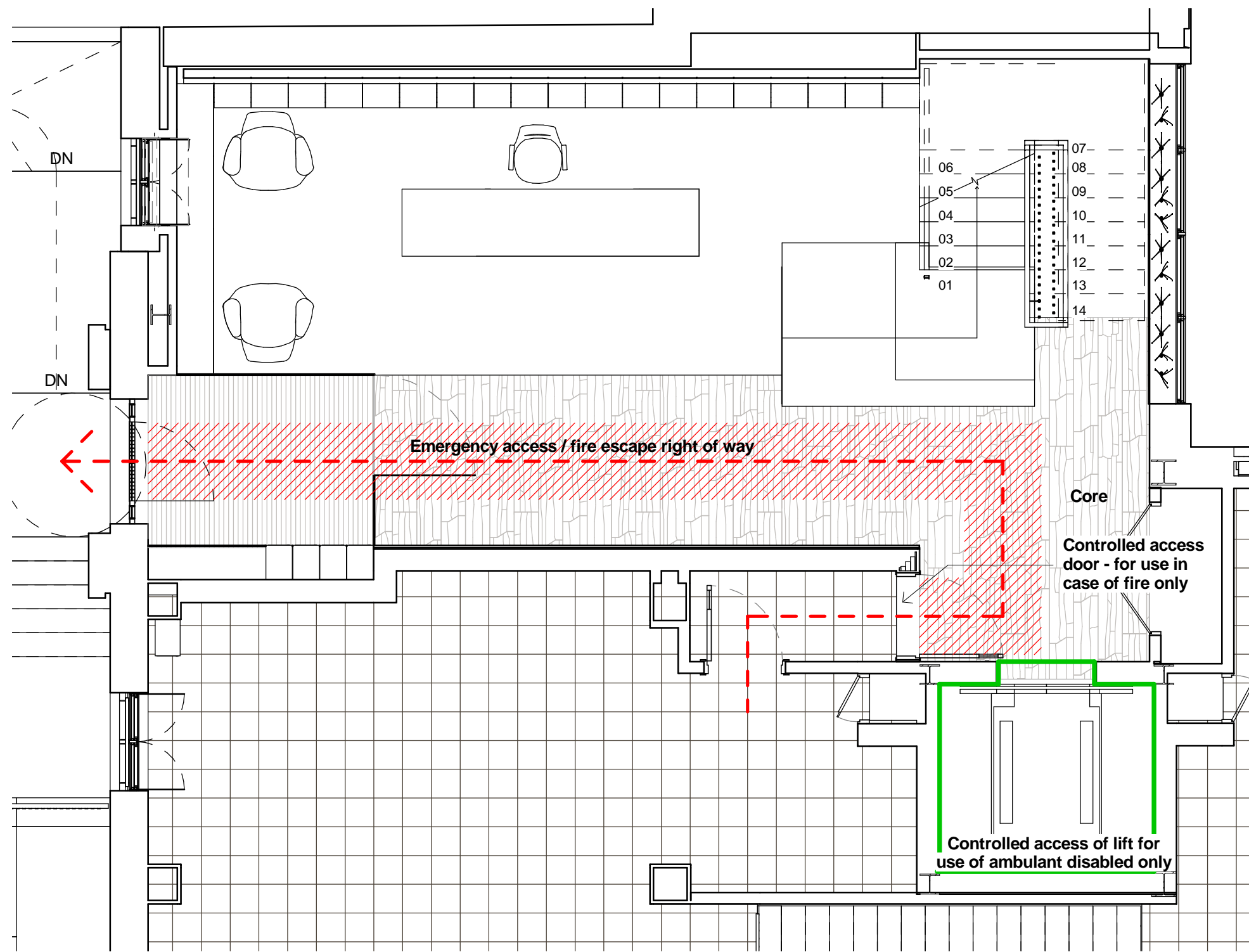


1 LEASE PLAN - OFFICE (Lower Ground Floor)  
1 : 50

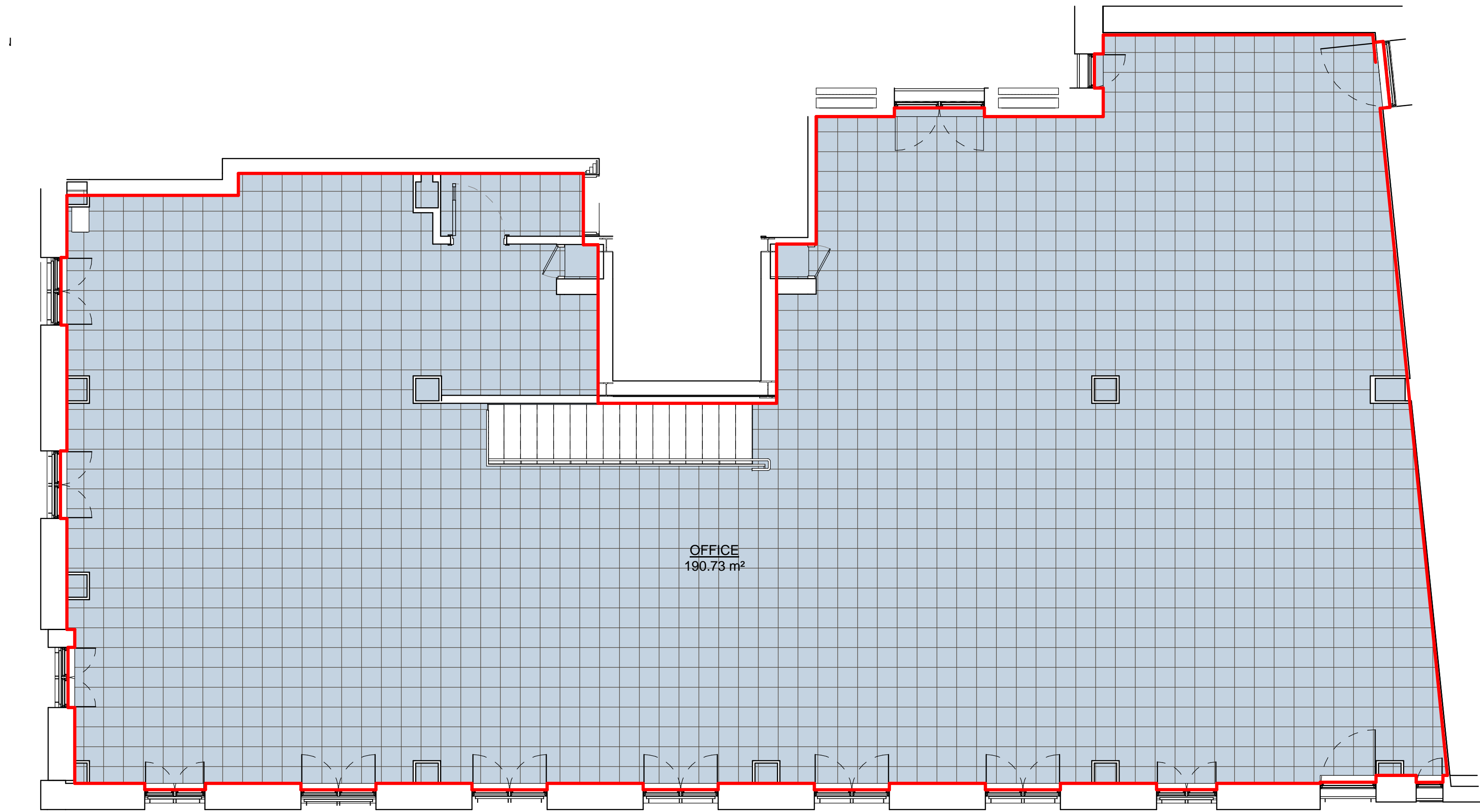
TOTAL GIA 321.47 sq.m



3 Lower Ground Core Plan  
1 : 50



4 Ground Floor Core Plan  
1 : 50



2 LEASE PLAN - OFFICE (Ground Floor)  
1 : 50

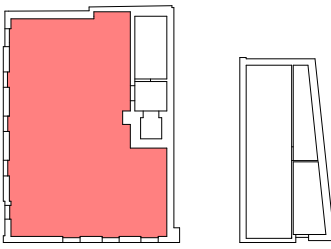
Do not scale dimensions. Dimensions govern.

All dimensions are in millimeters unless noted otherwise.

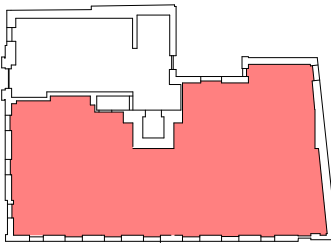
Pilbrow & Partners shall be notified in writing of any discrepancies.

Extent of Demise  
Communal Areas

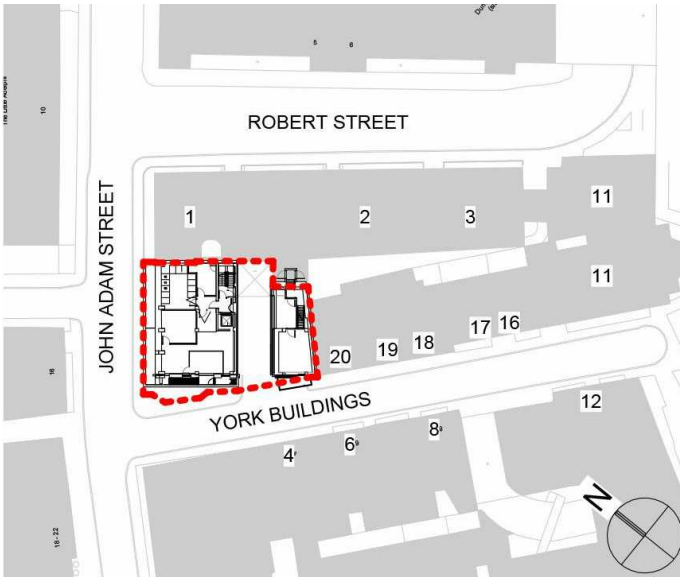
Legend



Lower Ground Floor



Ground Floor



Location Plan 1:1250

1 15/06/2013 Lease Plan Issue

Rev Issue Date Notes

Revisions

Pilbrow  
& Partners

2-5 St. John's Square  
London  
EC1M 4DE

t: +44 (0) 20 3696 7000  
e: info@pilbrowandpartners.com  
www.pilbrowandpartners.com

This drawing issued at First Contract is indicative of design intent and should be read in association with all specifications, schedules and consultants information. The Contractor is required to complete the detailed design, final coordination and interfaces. Contractor and Sub-Contractors design are subject to Architects approval.

Project Name

Ingram House

Status

Stage F - Construction

Drawing Title

Lease Plan - Lower Ground &  
Ground Floor - Office 13-15 John  
Adam Street, London WC2N 6LU

Drawing Number

1403-180-100

Scale	Sheet Size	Issue Date
As indicated	A1	15/06/2013
Revision	Issue	Drawn By
1		BT
		JD